

FLOATING SUCTION

ASSEMBLY (OIL SKIMMER - SINGLE ARM TYPE)

MODEL : VH-FSA-SA-01

Ven's Floating Suction Assembly is used in extracting pure liquid from inside big storage tanks by drawing the liquid from clean portion of the tank - without getting top floating or bottom settled sediments getting mixed up. The cleanest product just below the surface is extracted. This is vital because sediments, debris, oil, scum etc. often float on top surface or settle at bottom in the storage tank and if not properly filtered, they could contaminate the liquid product extracted.

Key Features of a Floating Suction Assembly:

1. Floating Mechanism: Floating device in the form of cylinders - typically a buoyant structure - mounted on a pipe and intake arrangement. Floats enable the whole assembly is floating on top of liquid surface.

2. Suction Intake: consists of a bent-necked arrangement coupled to the floats with an intake opening and positioned at a consistent depth beneath the surface of the liquid. This helps to avoid the sediments that gather on the tank's surface. The intake is provided with a vortex breaker at its suction to prevent the formation of a vortex when draining a tank.

3. Pipe Arrangement: consists of long pipes or arms on which floats and suction intake are mounted and contain swivel arrangement enabling rotating and folding of arms to adjust the positioning of the intake just below the liquid top.



**Floating Suction
Assembly**

For representation only. Actual Product shall vary in size, appearance as per customization

FLOATING SUCTION ASSEMBLY (OIL SKIMMER - SINGLE ARM TYPE) MODEL : VH-FSA-SA-01

Working:

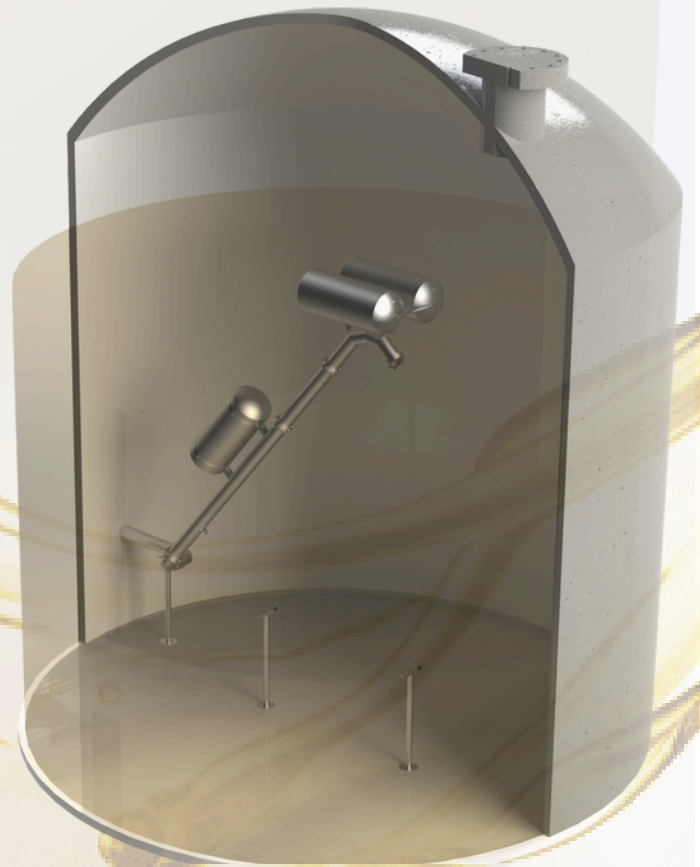
- The floats along with the intake move up and down on the top to match the varying liquid levels inside the tank.
- The height of the suction pipe which is beneath the floating level, can be adjusted to ensure it stays at the correct level, regardless of the fluctuations in liquid level. The product from the suction mouth is extracted down through the piping with swivel arrangement.
- While liquid level varies, the swivel arrangements rotate so that the pipes fold / bend like arms and maintain the floats and intake on top.



Vortex Breaker

Floats assembly consists of:

- Floats for skimmer
- Swivel Arrangement
- Elbows
- Swivel Arm (Articulated)
- Bell Mouth
- Vortex Breaker
- Rope/ Chain
- Flanges (ANSI B 16.5 #150/#300)
- Bottom Support Leg
- Positive Displacement Pump



**Vertical Tank for
Floating Suction Assembly**

For representation only. Actual Product shall vary in size, appearance as per customization

FLOATING SUCTION ASSEMBLY (OIL SKIMMER - SINGLE ARM TYPE) MODEL : VH-FSA-SA-01

Floating Suction Assembly



For representation only. Actual Product shall vary in size, appearance as per customization

Technical Details:

- **Type of floats:** Half submerged floats, Full submerged floats
- **MOC :** SS 316L, SS 316, SS 304, MS, Aluminium, Carbon Steel
- **Size of Pipe :** 2" to 26"
- **Arm Length:** To Suit the min and max level of liquid
- **No. of Arm :** Single Arm
- **Option :** Double Arm, Triple Arm

Features & Benefits:

- Self-Adjusting Design
- High Efficiency
- Minimal Water Intake
- Durable & Corrosion-Resistant
- Easy Installation & Maintenance
- Customizable Flow Rates
- Vortex breaker system available

Applications:

- Aviation Storage Tank
- Aviation Turbine Fuel Tank
- Petrochemicals Industry
- Industrial Wastewater Treatment
- Power Plants & Cooling Systems
- Marine & Offshore Applications
- Storage Tanks & Lagoons
- Air Craft Industries
- Motor Fuelling Tank
- Naphtha Tank
- Cone/ Dome roof Tank
- Floating roof Tank
- CRWS Tank
- HSD Tank etc...



Swivel Arrangement

FLOATING SUCTION

ASSEMBLY (OIL SKIMMER - DOUBLE ARM TYPE)

MODEL : VH-FSA-DA-02



VENS HYDROLUFT
FILTRATION SEPARATION



Ven's Floating Suction Assembly is used in extracting pure liquid from inside big storage tanks by drawing the liquid from clean portion of the tank - without getting top floating or bottom settled sediments getting mixed up. The cleanest product just below the surface is extracted. This is vital because sediments, debris, oil, scum etc. often float on top surface or settle at bottom in the storage tank and if not properly filtered, they could contaminate the liquid product extracted.

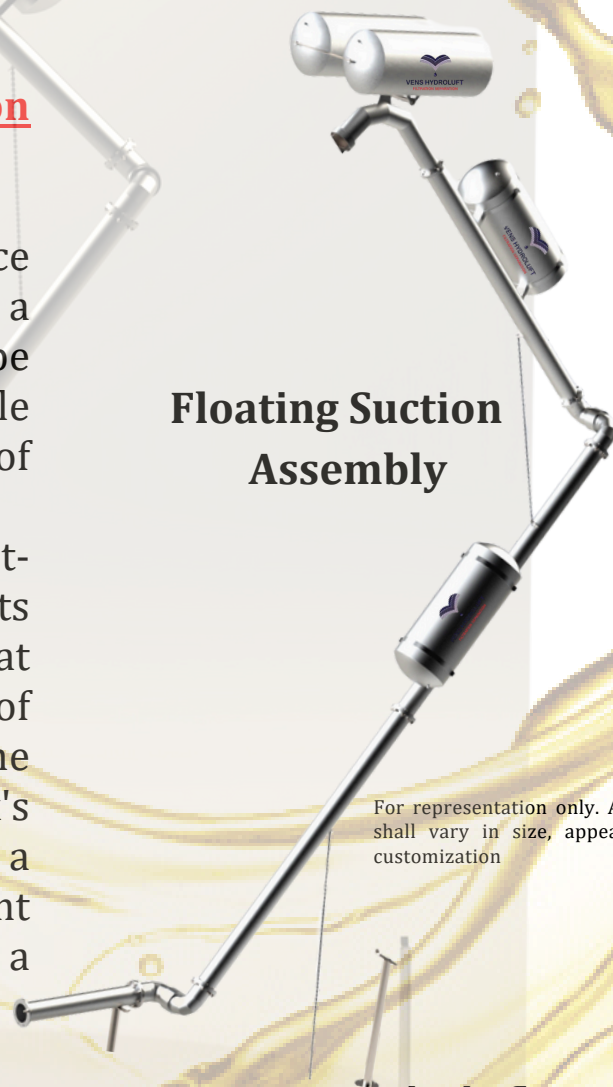
Key Features of a Floating Suction Assembly:

1. Floating Mechanism: Floating device in the form of cylinders - typically a buoyant structure - mounted on a pipe and intake arrangement. Floats enable the whole assembly is floating on top of liquid surface.

2. Suction Intake: consists of a bent-necked arrangement coupled to the floats with an intake opening and positioned at a consistent depth beneath the surface of the liquid. This helps to avoid the sediments that gather on the tank's surface. The intake is provided with a vortex breaker at its suction to prevent the formation of a vortex when draining a tank.

3. Pipe Arrangement: consists of long pipes or arms on which floats and suction intake are mounted and contain swivel arrangement enabling rotating and folding of arms to adjust the positioning of the intake just below the liquid top.

Floating Suction Assembly



For representation only. Actual Product shall vary in size, appearance as per customization

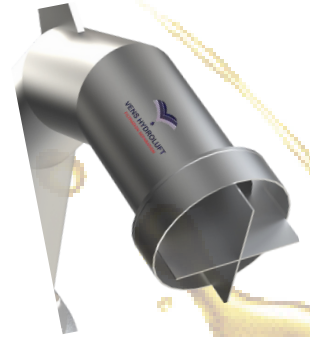


Working:

- The floats along with the intake move up and down on the top to match the varying liquid levels inside the tank.
- The height of the suction pipe which is beneath the floating level, can be adjusted to ensure it stays at the correct level, regardless of the fluctuations in liquid level. The product from the suction mouth is extracted down through the piping with swivel arrangement.
- While liquid level varies, the swivel arrangements rotate so that the pipes fold / bend like arms and maintain the floats and intake on top.

Floats assembly consists of:

- Floats for skimmer
- Swivel Arrangement
- Elbows
- Swivel Arm (Articulated)
- Bell Mouth
- Vortex Breaker
- Rope/ Chain
- Flanges (ANSI B 16.5 #150/#300)
- Bottom Support Leg
- Positive Displacement Pump



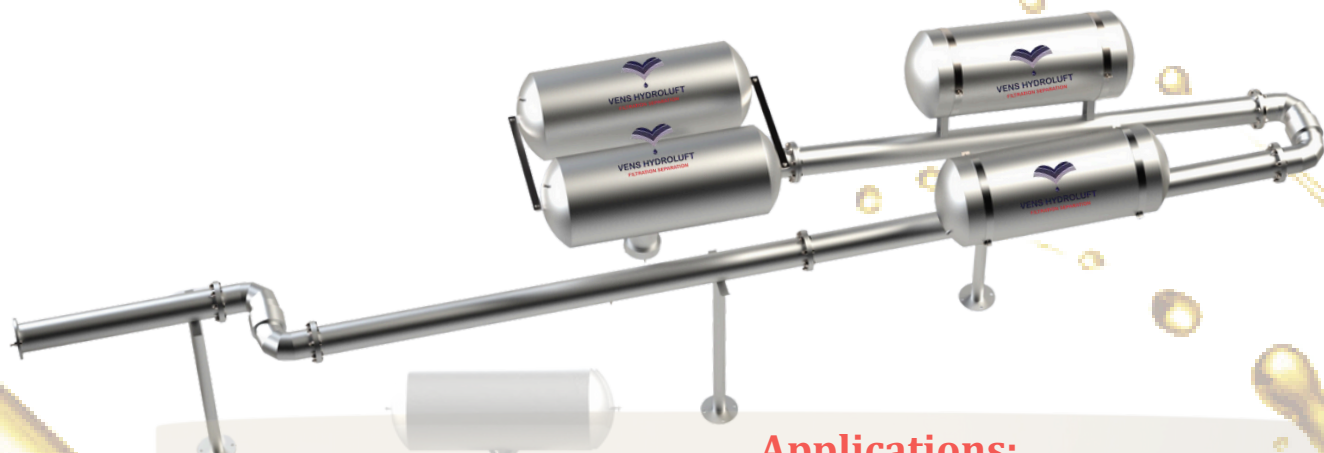
Vortex Breaker



For representation only. Actual Product shall vary in size, appearance as per customization

Vertical Tank for Floating Suction Assembly

FLOATING SUCTION ASSEMBLY (OIL SKIMMER - DOUBLE ARM TYPE) MODEL : VH-FSA-DA-02



Technical Details:

- **Type of floats:** Half submerged floats, Full submerged floats
- **MOC :** SS 316L, SS 316, SS 304, MS, Aluminium, Carbon Steel
- **Size of Pipe :** 2" to 26"
- **Arm Length:** To Suit the min and max level of liquid
- **No. of Arm :** Double Arm
- **Option :** Single Arm, Triple Arm

Features & Benefits:

- Self-Adjusting Design
- High Efficiency
- Minimal Water Intake
- Durable & Corrosion-Resistant
- Easy Installation & Maintenance
- Customizable Flow Rates
- Vortex breaker system available

Applications:

- Aviation Storage Tank
- Aviation Turbine Fuel Tank
- Petrochemicals Industry
- Industrial Wastewater Treatment
- Power Plants & Cooling Systems
- Marine & Offshore Applications
- Storage Tanks & Lagoons
- Air Craft Industries
- Motor Fuelling Tank
- Naphtha Tank
- Cone/ Dome roof Tank
- Floating roof Tank
- CRWS Tank
- HSD Tank etc...



Swivel
Arrangement